

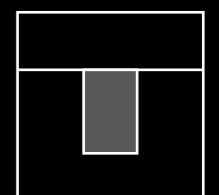


anto+

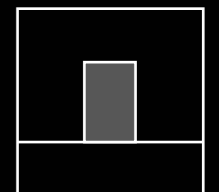


anto+

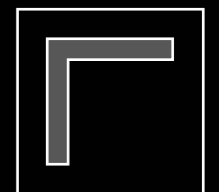
**LIKE JEWELLERY IN
LIGHTING DESIGN**



Surface



Recessed



Systems



IKONISCHER LINSENTUBUS & MASKE

Verschiedene Farben in Metallic-Optik für einzigartige Meisterwerke.

Iconic lens tube & mask
Tube de lentille emblématique et masque



BLENDFREI (UGR <16)

Anspruchsvolle Linsentechnologie für blendfreien Augenkomfort.

Glare-free (UGR <16)
Sans éblouissement (UGR < 16)



VERSCHIEDENE LINSEN

Verschiedene Strahlwinkel und ovale Formen zur Beleuchtung von Böden und Wänden.

Different lenses
Différentes lentilles



NATÜRLICHE FARBWIEDERGABE

Der Farbwiedergabeindex (Ra > 90) dieser Leuchte garantiert natürliche Farben.

Natural color reproduction (CRI > 90)
Rendu naturel des couleurs (IRC > 90)

EINFACHE INSTALLATION

Einbauversionen können mit Montagehalterungen einfach installiert werden.

Easy mounting
Installation facile



INSETS FÜR PROFILSYSTEME

Das anto+ Downlight ist auch für pure 3- und p.forty-Profilssysteme erhältlich.

Insets for profile systems
Inserts pour systèmes de profilé



DYNAMISCHES WEISS

Human Centric Lighting mit einstellbarem Weißlicht von 2.700 bis 6.500 Kelvin.

Dynamic white
Blanc dynamique



INDIVIDUELLE FARBEN

Die Gehäuse, Einsätze und Stromkabel sind in verschiedenen Farben erhältlich.

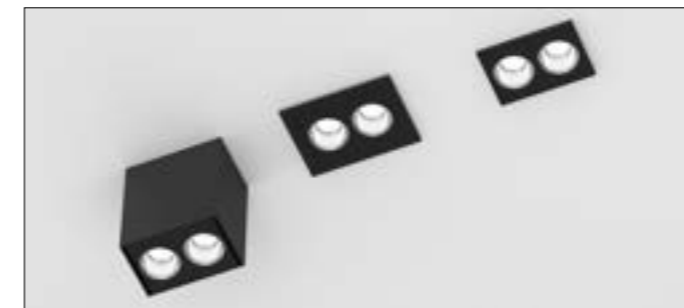
Individual colours
Couleurs de corps individuelles



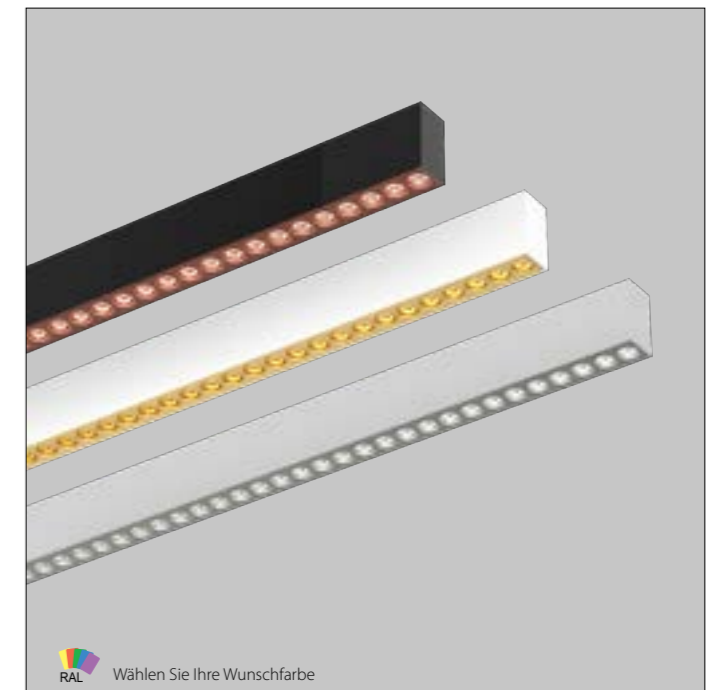
VERSCHIEDENE GRÖSSEN & PROFIL-EINSÄTZE



UNTERSCHIEDLICHE MONTAGEARTEN

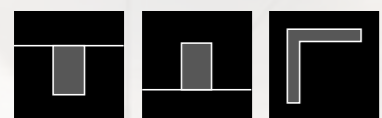


FARBKOMBINATIONEN

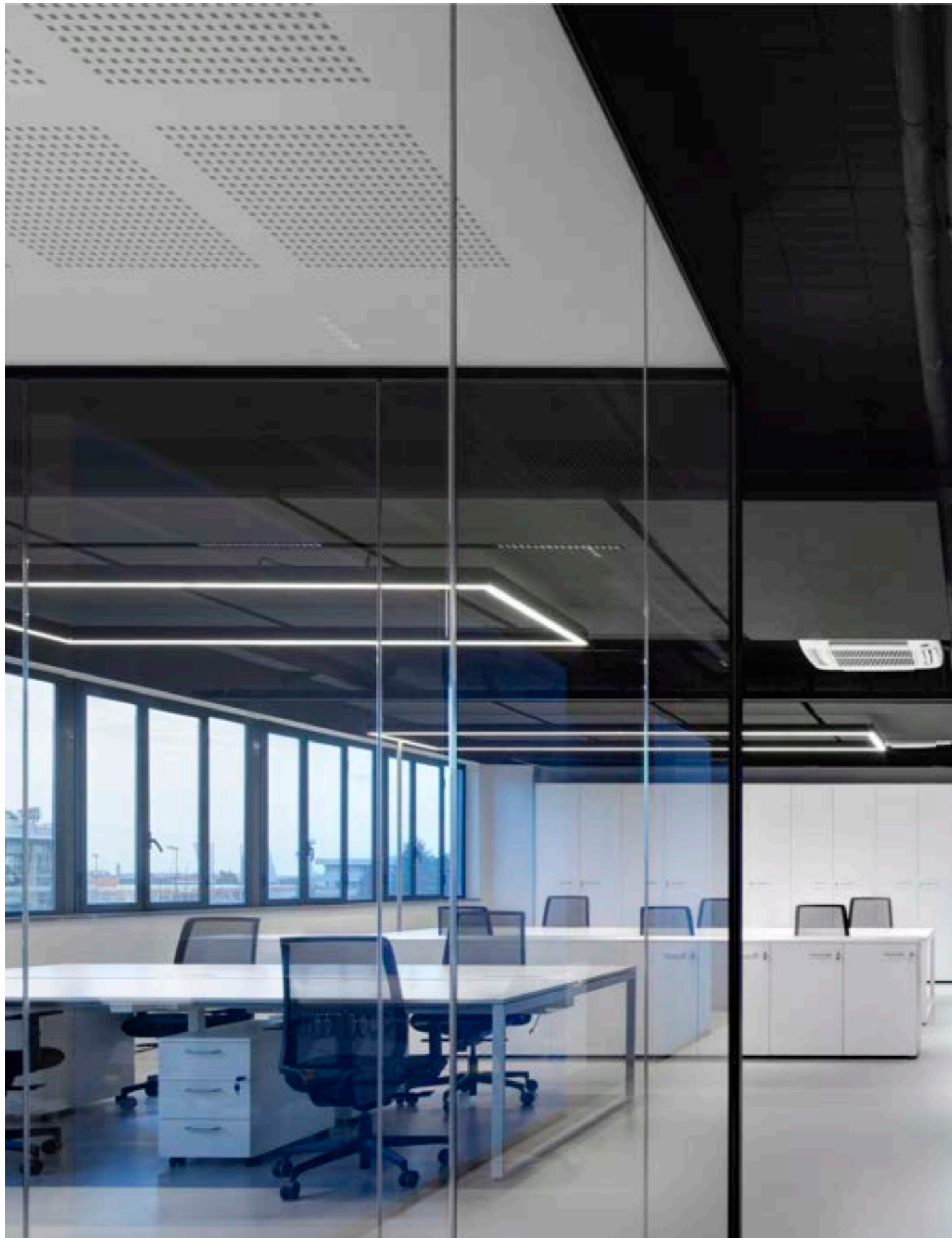


ANTO+ - LIKE JEWELLERY IN LIGHTING DESIGN

Projekt: Holiday Inn Messukeskus | Finnland
Foto: © Sampsa Paernaenen







NUOVI UFFICI GIOBERT SPA RIVOLI | ITALIEN

Produkte: anto+, p.forty



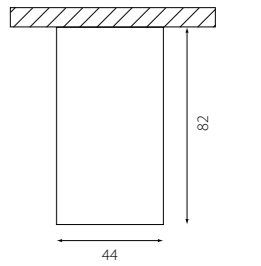
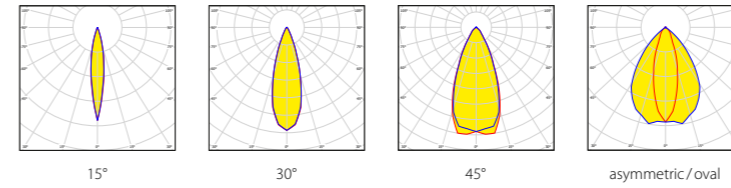
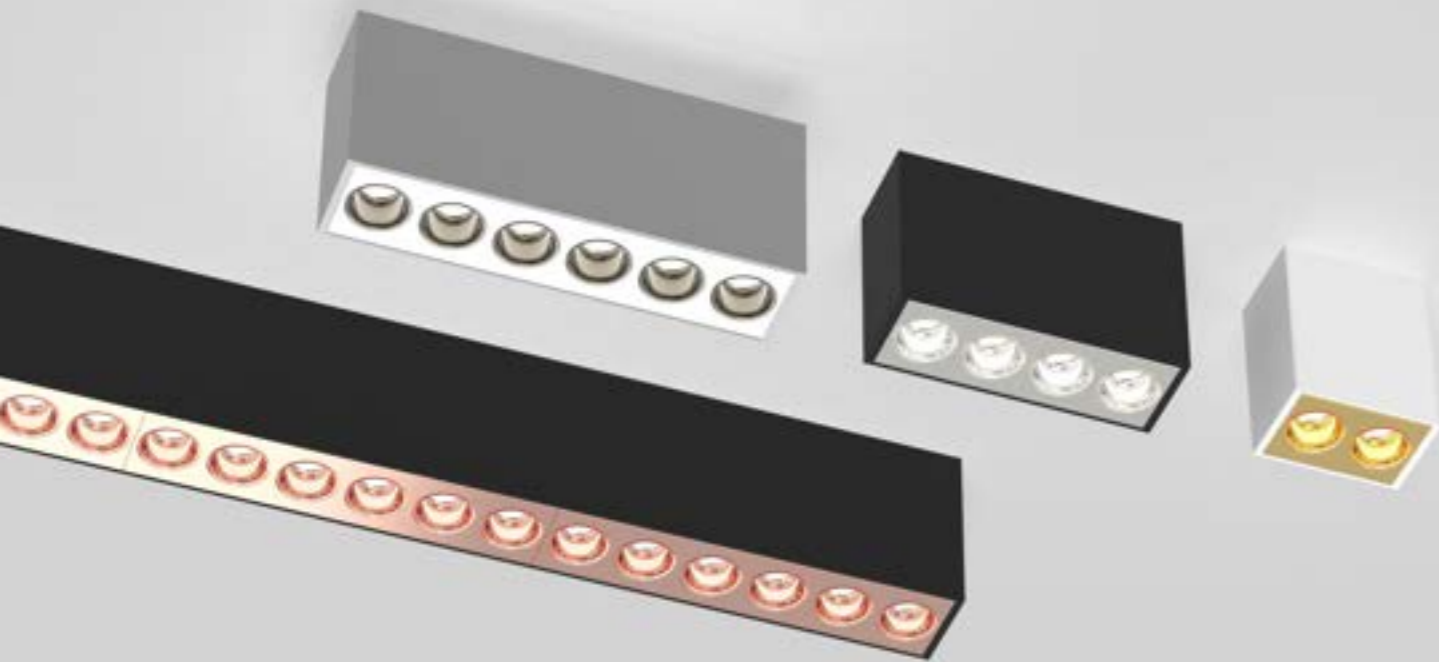
NEUBAU GEMEINSCHAFTSSCHULE CAMPUS CORDIS IN DRESDEN | DEUTSCHLAND

Produkte: anto+ insets, p.forty
Foto: © Robert Gommlich Fotografie | Planer: RBZ Generalplanungsgesellschaft, Raum und Bau, AGZ Zimmermann Architekten GmbH



DELUXE BERGBLICK APARTMENT | ÖSTERREICH

Produkte: anto+, halo



LUMINOUS FLUX (LM) ANTO+ / LENS TUBE SILVER MATTE

	2700 K CRI > 90				3000 K CRI > 90				4000 K output CRI > 90				dynamic white CRI > 90			
	15°	30°	45°	asym.	15°	30°	45°	asym.	15°	30°	45°	asym.	15°	30°	45°	asym.
2 spots	241 lm	220 lm	184 lm	193 lm	246 lm	224 lm	188 lm	197 lm	256 lm	234 lm	196 lm	205 lm				
4 spots	478 lm	435 lm	365 lm	382 lm	487 lm	444 lm	372 lm	390 lm	507 lm	463 lm	389 lm	406 lm				
6 spots	737 lm	672 lm	564 lm	590 lm	752 lm	685 lm	575 lm	602 lm	783 lm	714 lm	600 lm	627 lm				
8 spots	990 lm	901 lm	756 lm	791 lm	1008 lm	919 lm	770 lm	807 lm	1050 lm	958 lm	805 lm	840 lm				
12 spots	1526 lm	1391 lm	1167 lm	1221 lm	1557 lm	1418 lm	1190 lm	1246 lm	1621 lm	1478 lm	1242 lm	1298 lm				
18 spots	2211 lm	2016 lm	1692 lm	1770 lm	2256 lm	2055 lm	1725 lm	1806 lm	2349 lm	2142 lm	1800 lm	1881 lm	1128 lm	1028 lm	863 lm	903 lm

SYSTEM POWER (W)

	dyn. white	
2 spots	4,1 W	270 g
4 spots	7,7 W	390 g
6 spots	10 W	520 g
8 spots	14 W	680 g
12 spots	19 W	950 g
18 spots	29 W	1310 g

(based on medium non-dim)

VARIATIONS ANTO+ SURFACE

	MEDIUM OUTPUT		DYNAMIC WHITE
	non-dim	DALI	
2 spots	●	-	-
4 spots	●	-	-
6 spots	●	-	-
8 spots	●	●	-
12 spots	●	●	-
18 spots	●	●	●

1 SIZE

- 2 spots - 67 mm
- 4 spots - 127 mm
- 6 spots - 187 mm
- 8 spots - 247 mm
- 12 spots - 367 mm
- 18 spots - 547 mm

2 TUBE COLOUR

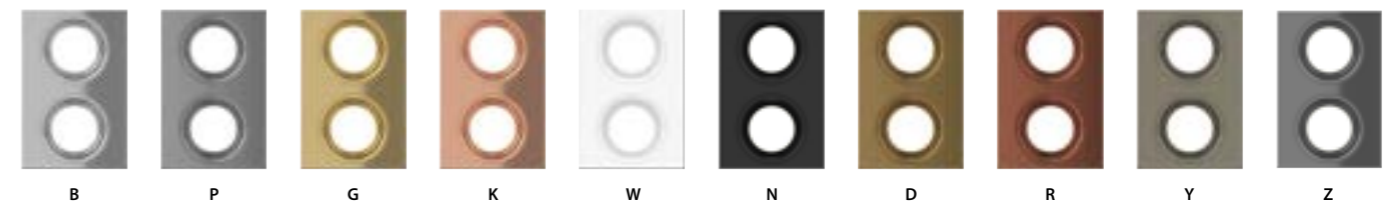
006	high-gloss silver	B	black (RAL 9005)	N
012	silver matte	P	glaring gold	D
018	high-gloss gold	G	capital copper	R
024	high-gloss copper	K	gunnery grey	Y
036	white (RAL 9016)	W	high gloss black chrome	Z
054				

3 MASK COLOUR

high-gloss silver	B	black (RAL 9005)	N
silver matte	P	glaring gold	D
high-gloss gold	G	capital copper	R
high-gloss copper	K	gunnery grey	Y
white (RAL 9016) *	W	high-gloss black chrome	Z

UGR > 19 (only 45° 930/940)

3 MASK COLOUR



4 HOUSING COLOUR

- silver
- white
- black
- RAL of your choice

5 LED

SI	2700 K, CRI > 90	927
WS	3000 K, CRI > 90	930
SW	4000 K, CRI > 90	940
	2700-6500 K, dynamic white, CRI > 90 (18 spots only)	HCL

6 OUTPUT & CONTROL

	medium output, non dim	M1
	medium output, DALI	M3
	dynamic white	X3

7 BEAM

- 15°
- 30°
- 45°
- asymmetric / oval

COMPARE LENS TUBES ANTO+ / SURFACE 18 SPOTS

lens tube	2700 K				3000 K				4000 K				dynamic white *			
	15°	30°	45°	asym.	15°	30°	45°	asym.	15°	30°	45°	asym.	15°	30°	45°	asym.
silver matte	2211 lm	2016 lm	1692 lm	1770 lm	2256 lm	2055 lm	1725 lm	1806 lm	2349 lm	2142 lm	1800 lm	1181 lm	1128 lm	1028 lm	863 lm	903 lm
high-gloss silver	2364 lm	2169 lm	1986 lm	2124 lm	2412 lm	2211 lm	2025 lm	2166 lm	2511 lm	2307 lm	2112 lm	2303 lm	1206 lm	1106 lm	1013 lm	1083 lm
white 9016	2307 lm	2124 lm	1848 lm	1944 lm	2352 lm	2166 lm	1884 lm	1983 lm	2451 lm	2256 lm	1965 lm	2150 lm	1177 lm	1083 lm	943 lm	991 lm
black 9005	2118 lm	1920 lm	1497 lm	1494 lm	2160 lm	1959 lm	1527 lm	1524 lm	2250 lm	2040 lm	1590 lm	1587 lm	1080 lm	979 lm	763 lm	762 lm
high-gloss gold	2349 lm	2154 lm	1983 lm	2121 lm	2397 lm	2196 lm	2022 lm	2163 lm	2496 lm	2289 lm	2109 lm	2277 lm	1198 lm	1097 lm	1011 lm	1082 lm
high gloss copper	2325 lm	2145 lm	1983 lm	2067 lm	2373 lm	2187 lm	2022 lm	2109 lm	2472 lm	2280 lm	2106 lm	2213 lm	1186 lm	1094 lm	1011 lm	1054 lm
glaring gold	2172 lm	1971 lm	1584 lm	1644 lm	2214 lm	2010 lm	1617 lm	1677 lm	2310 lm	2094 lm	1683 lm	1746 lm	1108 lm	1005 lm	808 lm	838 lm
capital copper	2151 lm	1944 lm	1512 lm	1566 lm	2193 lm	1983 lm	1542 lm	1596 lm	2286 lm	2067 lm	1608 lm	1665 lm	1097 lm	991 lm	771 lm	799 lm
gunnery grey	2202 lm	1980 lm	1590 lm	1650 lm	2247 lm	2019 lm	1623 lm	1683 lm	2340 lm	2106 lm	1689 lm	1755 lm	1123 lm	1010 lm	811 lm	842 lm
high-gloss black-chrome	2107 lm	1933 lm	1770 lm	1893 lm	2150 lm	1971 lm	1805 lm	1931 lm	2238 lm	2056 lm	1883 lm	2053 lm	1075 lm	986 lm	903 lm	965 lm

* dynamic white lumens = 2700 K, Lumens 6500 K ca. +11%

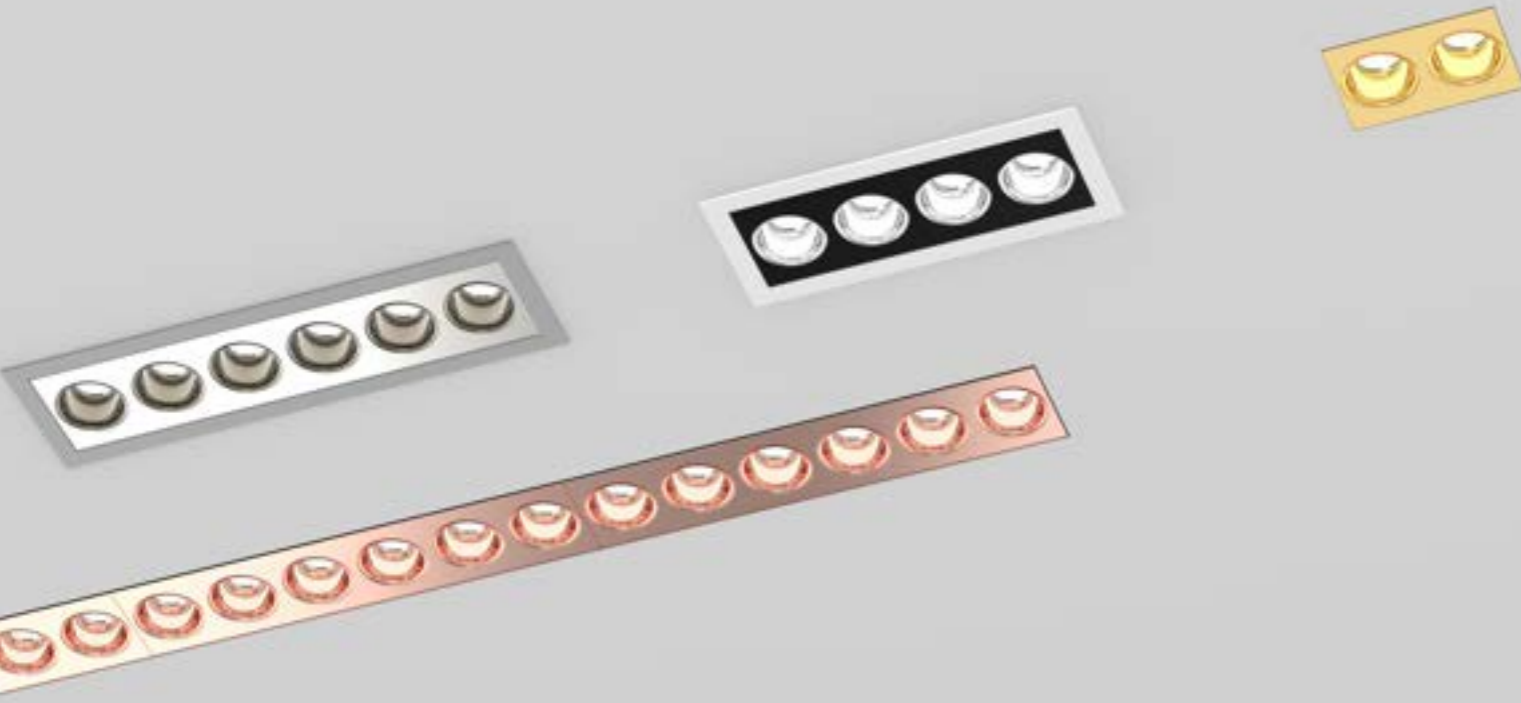
S44A 1-2 3 4 C1 5 6 7

S44A024 - KYWSC1HCLX3A 8 spots, lens tube high-gloss copper, mask gunnery grey, CRI > 90, housing white, IP20, direct, asymmetric, dynamic white, CRI 90, DALI, asymmetric (order sample)

Configure online on [KATALOG.PLANLICHT.COM](https://www.katalog.planlicht.com)



Down to UGR ≤ 16 | up to 94 lm/W | IEC 62471: Blue light hazard: RG ≤ 1 | DALI switchDIM



1 MOUNTING

Frame	E
Frameless	F

2 SIZE

FRAME		FRAMELESS	
2 spots - 76 mm	007	2 spots - 64 mm	006
4 spots - 136 mm	013	4 spots - 124 mm	012
6 spots - 196 mm	019	6 spots - 184 mm	018
8 spots - 256 mm	025	8 spots - 244 mm	024
12 spots - 376 mm	037	12 spots - 364 mm	036
18 spots - 556 mm	055	18 spots - 544 mm	054

3 TUBE COLOUR

high-gloss silver	B	black (RAL 9005)	N
silver matte	P	glaring gold	D
high-gloss gold	G	capital copper	R
high-gloss copper	K	gunnery grey	Y
white (RAL 9016)	W	high-gloss black chrome	Z NEW

4 MASK COLOUR

high-gloss silver	B	black (RAL 9005)	N
silver matte	P	glaring gold	D
high-gloss gold	G	capital copper	R
high-gloss copper	K	gunnery grey	Y
white (RAL 9016)	W	high-gloss black chrome	Z NEW

5 HOUSING COLOUR

silver	SI
white	WS
black	SW
RAL of your choice	☛

6 LED

2700 K, CRI > 90	927
3000 K, CRI > 90	930
4000 K, CRI > 90	940
2700-6500 K, dynamic white, CRI > 90	HCL

7 OUTPUT / CONTROL

low output non-dim	L1
high output non-dim	H1
high output DALI	H3
dynamic white	X3

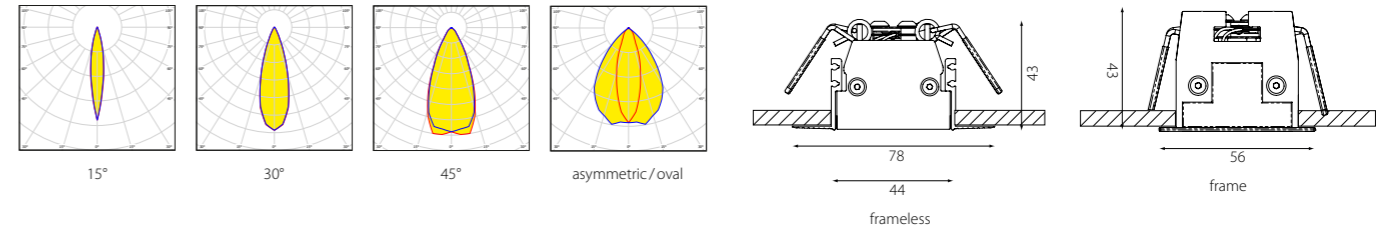
8 BEAM

15°	1
30°	3
45°	4
asymmetric / oval	A

S44 1 2 3 4 5 C1 6 7 8

S44E019-RDSWC1927H33 Recessed frame, 6 spots, lens tube capital copper, mask glaring gold, housing black, IP 20, direct, 2700 K, CRI > 90, high output DALI, 30° (order sample)

► Configure online on KATALOG.PLANLICHT.COM



LUMINOUS FLUX (LM) anto+ / lens tube silver matte

	low output				high output				dynamic white			
	15°	30°	45°	asym.	15°	30°	45°	asym.	15°	30°	45°	asym.
2700 K												
2 spots	193lm	181lm	151lm	155lm	336lm	313lm	264lm	276lm	-	-	-	-
4 spots	339lm	326lm	294lm	305lm	656lm	607lm	510lm	545lm	291lm	280lm	253lm	262lm
6 spots	560lm	507lm	419lm	438lm	969lm	874lm	716lm	757lm	482lm	436lm	360lm	377lm
8 spots	756lm	712lm	593lm	609lm	1357lm	1266lm	1066lm	1115lm	658lm	612lm	526lm	530lm
12 spots	1123lm	1057lm	881lm	904lm	1989lm	1857lm	1564lm	1634lm	966lm	909lm	757lm	777lm
18 spots	1674lm	1576lm	1312lm	1346lm	2952lm	2756lm	2319lm	2424lm	1423lm	1340lm	1115lm	1144lm
3000 K												
2 spots	197lm	185lm	154lm	158lm	343lm	320lm	269lm	282lm				
4 spots	346lm	333lm	300lm	311lm	669lm	619lm	520lm	556lm				
6 spots	552lm	524lm	427lm	447lm	949lm	893lm	734lm	763lm				
8 spots	772lm	727lm	605lm	621lm	1384lm	1292lm	1088lm	1137lm				
12 spots	1147lm	1079lm	899lm	922lm	2030lm	1895lm	1595lm	1667lm				
18 spots	1763lm	1686lm	1404lm	1440lm	3062lm	2927lm	2463lm	2574lm				
4000 K												
2 spots	205lm	193lm	161lm	165lm	357lm	333lm	280lm	293lm				
4 spots	360lm	346lm	312lm	324lm	697lm	645lm	542lm	580lm				
6 spots	575lm	544lm	446lm	467lm	993lm	929lm	764lm	805lm				
8 spots	805lm	757lm	630lm	647lm	1442lm	1346lm	1133lm	1184lm				
12 spots	1193lm	1123lm	935lm	959lm	2114lm	1973lm	1661lm	1735lm				
18 spots	1834lm	1718lm	1430lm	1467lm	3187lm	3006lm	2530lm	2644lm				

SYSTEM POWER (W)

	low output	high output	dynamic white
2 spots	3W	6,7W	-
4 spots	5,1W	10,5W	7W
6 spots	7,2W	13,5W	9,5W
8 spots	9,6W	18W	11,5W
12 spots	13W	26W	15,5W
18 spots	19,5W	41W	22W

VARIATIONS ANTO+ RECESSED

	LOW OUTPUT		HIGH OUTPUT		DYNAMIC
	non-dim	DALI	non-dim	DALI	WHITE
2 spots	●	-	●	●	-
4 spots	●	-	●	●	●
6 spots	●	-	●	●	●
8 spots	●	-	●	●	●
12 spots	●	-	●	●	●
18 spots	●	-	●	●	●



Down to UGR ≤ 16 | up to 99 lm/W | IEC 62471: Blue light hazard: RG ≤ 1 | DALI

COMPARE LENS TUBES ANTO+ / RECESSED 8 SPOTS / HIGH OUTPUT DALI, DYNAMIC WHITE

lens tube	2700 K				3000 K				4000 K				dynamic white*			
	15°	30°	45°	asym.	15°	30°	45°	asym.	15°	30°	45°	asym.	15°	30°	45°	asym.
high-gloss silver	1428lm	1347lm	1240lm	1327lm	1457lm	1375lm	1265lm	1354lm	1518lm	1432lm	1317lm	1409lm	693lm	674lm	613lm	623lm
silver matte	1357lm	1266lm	1066lm	1115lm	1384lm	1292lm	1088lm	1137lm	1442lm	1346lm	1133lm	1184lm	658lm	612lm	526lm	530lm
high-gloss gold	1428lm	1347lm	1240lm	1327lm	1457lm	1375lm	1265lm	1354lm	1518lm	1432lm	1317lm	1409lm	693lm	662lm	612lm	623lm
high-gloss copper	1392lm	1313lm	1215lm	1267lm	1421lm	1340lm	1240lm	1393lm	1480lm	1396lm	1290lm	1346lm	679lm	658lm	600lm	592lm
white (RAL9016)	1392lm	1313lm	1141lm	1201lm	1421lm	1340lm	1164lm	1225lm	1480lm	1396lm	1212lm	1275lm	679lm	656lm	570lm	573lm
black (RAL9005)	1271lm	1179lm	918lm	916lm	1297lm	1203lm	936lm	934lm	1351lm	1253lm	974lm	972lm	623lm	574lm	447lm	442lm
glaring gold	1299lm	1212lm	973lm	1009lm	1326lm	1237lm	993lm	1029lm	1381lm	1289lm	1034lm	1071lm	633lm	594lm	484lm	479lm
capital copper	1299lm	1212lm	942lm	975lm	1326lm	1237lm	961lm	995lm	1381lm	1289lm	1001lm	1036lm	626lm	582lm	469lm	467lm
gunnery grey	1299lm	1212lm	973lm	1009lm	1326lm	1237lm	993lm	1029lm	1381lm	1289lm	1034lm	1071lm	633lm	598lm	484lm	479lm
high-gloss black chrome	1273lm	1201lm	1105lm	1183lm	1299lm	1226lm	1128lm	1207lm	1353lm	1276lm	1174lm	1256lm	618lm	601lm	546lm	555lm

* dynamic white lumens = 2700K, Lumens 6500K ca. +11%

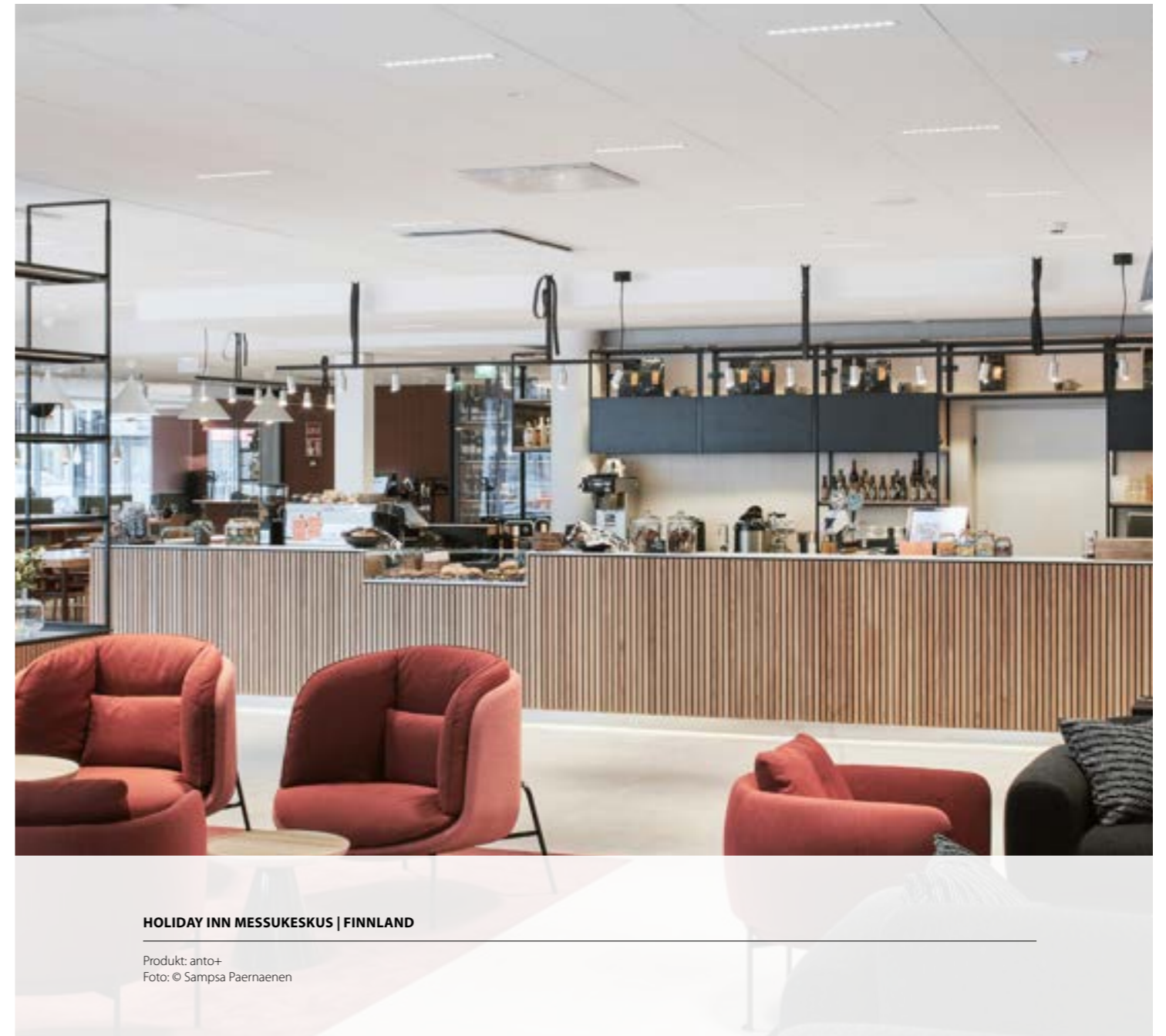
OPTIONAL ACCESSORY

S44-F-SET-MONT

- anto+ Dis-/assembly kit **frameless** (3 parts)
- anto+ De-/Montageset **frameless** (3 Teile)
- anto+ Set de dé-/montage **sans cadre** (3 parties)
- anto+ Kit di s-/montaggio **senza cornice** (3 parti)

CUT OUT / WEIGHT (g)

	FRAME				FRAMELESS			
	FRAME	↑ DALI	↑ non-dim	↑ HCL	FRAMELESS	↑ DALI	↑ non-dim	↑ HCL
2 spots	70x49mm	X+160mm/290g	X+55mm/180g		73x52mm	X+160mm/340g	X+70mm/230g	
4 spots	130x49mm	X+90mm/360g	X+55mm/260g	X+191mm/510g	133x52mm	X+90mm/440g	X+70mm/340g	X+191mm/590g
6 spots	190x49mm	X+55mm/470g	X+55mm/440g	X+70mm/590g	193x52mm	X+70mm/570g	X+70mm/540g	X+70mm/690g
8 spots	250x49mm	X+55mm/540g	X+55mm/520g	X+70mm/660g	253x52mm	X+70mm/660g	X+70mm/640g	X+70mm/780g
12 spots	370x49mm	X+55mm/700g	X+55mm/650g	X+70mm/800g	373x52mm	X+70mm/860g	X+70mm/810g	X+70mm/960g
18 spots	550x49mm	X+70mm/940g	X+55mm/840g	X+70mm/1030g	553x52mm	X+70mm/1135g	X+70mm/1030g	X+70mm/1240g



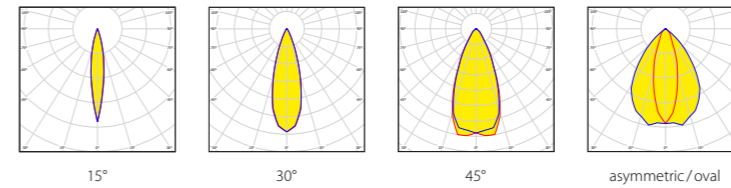
HOLIDAY INN MESSUKESKUS | FINNLAND

Produkt: anto+
Foto: © Sampsa Paernaenen

anto+ inset for p.forty & pure 3 systems

Systeme | Downlight Inset p.forty & pure 3
Systems | Downlight Inset p.forty & pure 3
Systèmes | Downlight Inset p.forty & pure 3

ANTO+ INSET FOR P.FORTY & PURE 3 | SYSTEMS



LUMINOUS FLUX (LM) / ANTO+ / LENS TUBE SILVER MATTE, CRI > 90

	2700 K				3000 K				4000 K				dynamic white			
	15°	30°	45°	asym.	15°	30°	45°	asym.	15°	30°	45°	asym.	15°	30°	45°	asym.
2 spots	241 lm	220 lm	184 lm	193 lm	246 lm	224 lm	188 lm	197 lm	256 lm	234 lm	196 lm	205 lm	-	-	-	-
4 spots	478 lm	435 lm	365 lm	382 lm	487 lm	444 lm	372 lm	390 lm	507 lm	463 lm	389 lm	406 lm	-	-	-	-
6 spots	737 lm	672 lm	564 lm	590 lm	752 lm	685 lm	575 lm	602 lm	783 lm	714 lm	600 lm	627 lm	-	-	-	-
8 spots	990 lm	901 lm	756 lm	791 lm	1008 lm	919 lm	770 lm	807 lm	1050 lm	958 lm	805 lm	840 lm	-	-	-	-
12 spots	1526 lm	1391 lm	1167 lm	1221 lm	1557 lm	1418 lm	1190 lm	1246 lm	1621 lm	1478 lm	1242 lm	1298 lm	-	-	-	-
18 spots	2211 lm	2016 lm	1692 lm	1770 lm	2256 lm	2055 lm	1725 lm	1806 lm	2349 lm	2142 lm	1800 lm	1181 lm	1128 lm	1028 lm	863 lm	903 lm
30 spots	3685 lm	3360 lm	2820 lm	2950 lm	3760 lm	3425 lm	2875 lm	3010 lm	3915 lm	3570 lm	3000 lm	3135 lm	1880 lm	1713 lm	1438 lm	1505 lm

COMPARE LENS TUBE ANTO+ / SURFACE 18 SPOTS

lens tube	4000 K			
	15°	30°	45°	asym.
high-gloss silver	2511 lm	2307 lm	2112 lm	2303 lm
silver matte	2349 lm	2142 lm	1800 lm	1881 lm
high-gloss gold	2496 lm	2289 lm	2109 lm	2277 lm
high-gloss copper	2472 lm	2280 lm	2106 lm	2213 lm
white (RAL 9016)	2451 lm	2256 lm	1965 lm	2150 lm
black (RAL 9005)	2250 lm	2040 lm	1590 lm	1587 lm
glaring gold	2310 lm	2094 lm	1683 lm	1746 lm
capital copper	2286 lm	2067 lm	1608 lm	1665 lm
gunnery grey	2340 lm	2106 lm	1689 lm	1755 lm
high-gloss black chrome	2238 lm	2056 lm	1883 lm	2053 lm

SYSTEM POWER (W) / WEIGHT

	non dim DALI		dyn. white		Inset p.forty		Inset pure 3	
					non-dim	DALI/HCL	non-dim	DALI/HCL
2 spots	4,1 W				0,1 kg		0,1 kg	
4 spots	7,7 W				0,1 kg		0,1 kg	
6 spots	10 W				0,3 kg	0,4 kg	0,3 kg	0,4 kg
8 spots	14 W				0,5 kg	0,5 kg	0,5 kg	0,5 kg
12 spots	19 W	11 W			0,5 kg	0,6 kg	0,6 kg	0,6 kg
18 spots	29 W	17 W			0,6 kg	0,6 kg	0,6 kg	0,7 kg
30 spots	47 W	27 W			1,0 kg	1,0 kg	1,0 kg	1,0 kg

VARIATIONS ANTO+ INSETS

	MEDIUM OUTPUT		DYNAMIC
	non-dim	DALI	WHITE
2 spots	●	-	-
4 spots	●	-	-
6 spots	●*	●*	-
8 spots	●*	●*	-
12 spots	●*	●*	●*
18 spots	●	●	●
30 spots	●	●	●

* blind cover

1 SPOTS

- 2 spots
- 4 spots
- 6 spots (2x100mm Blind Cover)
- 8 spots (2x100mm Blind Cover)
- 12 spots (2x100mm Blind Cover)
- 18 spots
- 30 spots

2 LENS TUBE COLOUR

- 02** high-gloss silver
- 04** silver matte
- 06** high-gloss gold
- 08** high-gloss cooper
- 12** white (RAL 9016)*
- 18**
- 30**

3 MASK COLOUR

- N** high-gloss silver
- D** silver matte
- R** high-gloss gold
- Y** high-gloss cooper
- Z NEW** white (RAL 9016)
- B** black (RAL 9005)
- P** glaring gold
- G** capital cooper
- K** gunnery grey
- W** high gloss black chrome (for p.forty only)

4 LED

- 927** 2700 K, CRI > 90
- 930** 3000 K, CRI > 90
- 940** 4000 K, CRI > 90
- HCL** 2700-6500 K, dynamic white, CRI > 90

5 OUTPUT

- M** medium output
- X** dynamic white

6 DIM

- 1** non-dim
- 3** DALI

7 BEAM ANGLE

- 1** 15°
- 3** 30°
- 4** 45°
- A** asymmetric/oval

P-A 1-2-3-4-5-6-7

P-A18-PZ940M14 Inset 18 spots, for p.forty/lens tube silver matte, mask high gloss black chrome, 4000K, CRI > 90, medium output, non-dim, beam angle 45° (order sample)

► Configure online on KATALOG.PLANLICHT.COM

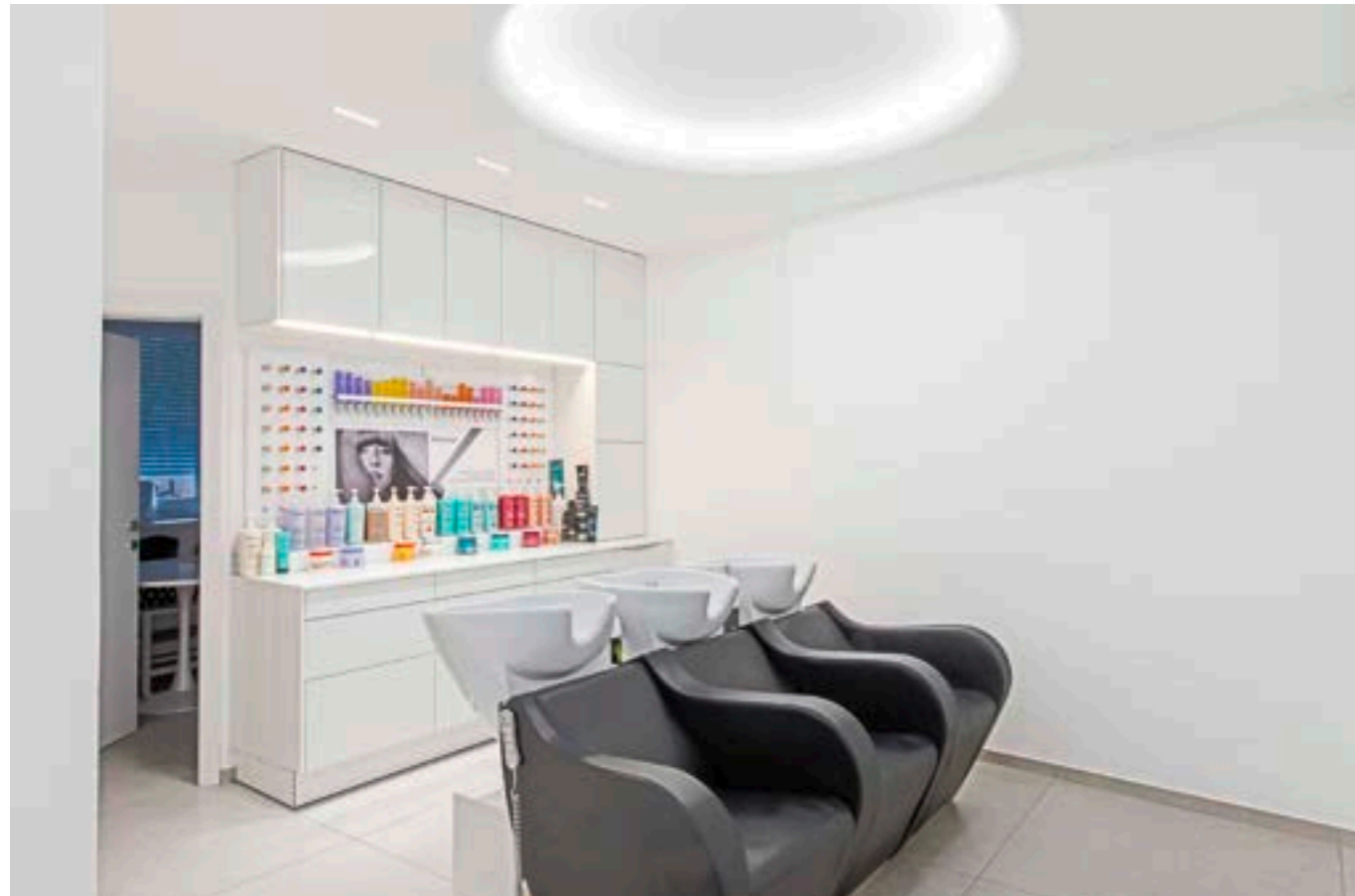


Down to UGR ≤ 16 | up to 99 lm/W | IEC 62471: Blue light hazard: RG ≤ 1 | DALI switchDIM

ANTO+ INSET FOR P.FORTY & PURE 3 | SYSTEMS

COMPARE LENS TUBES / ANTO+ INSET 18 SPOTS

lens tube	2700 K				3000 K				4000 K				dynamic white			
	15°	30°	45°	asym.	15°	30°	45°	asym.	15°	30°	45°	asym.	15°	30°	45°	asym.
silver matte	2211 lm	2016 lm	1692 lm	1770 lm	2256 lm	2055 lm	1725 lm	1806 lm	2349 lm	2142 lm	1800 lm	1881 lm	1128 lm	1028 lm	863 lm	903 lm
high-gloss silver	2364 lm	2169 lm	1986 lm	2124 lm	2412 lm	2211 lm	2025 lm	2166 lm	2511 lm	2307 lm	2112 lm	2303 lm	1206 lm	1106 lm	1013 lm	1083 lm
white 9016	2307 lm	2124 lm	1848 lm	1944 lm	2352 lm	2166 lm	1884 lm	1983 lm	2451 lm	2256 lm	1965 lm	2150 lm	1177 lm	1083 lm	943 lm	991 lm
black 9005	2118 lm	1920 lm	1497 lm	1494 lm	2160 lm	1959 lm	1527 lm	1524 lm	2250 lm	2040 lm	1590 lm	1587 lm	1080 lm	979 lm	763 lm	762 lm
high-gloss gold	2349 lm	2154 lm	1983 lm	2121 lm	2397 lm	2196 lm	2022 lm	2163 lm	2496 lm	2289 lm	2109 lm	2277 lm	1198 lm	1097 lm	1011 lm	1082 lm
high gloss copper	2325 lm	2145 lm	1983 lm	2067 lm	2373 lm	2187 lm	2022 lm	2109 lm	2472 lm	2280 lm	2106 lm	2213 lm	1186 lm	1094 lm	1011 lm	1054 lm
glaring gold	2172 lm	1971 lm	1584 lm	1644 lm	2214 lm	2010 lm	1617 lm	1677 lm	2310 lm	2094 lm	1683 lm	1746 lm	1108 lm	1005 lm	808 lm	838 lm
capital copper	2151 lm	1944 lm	1512 lm	1566 lm	2193 lm	1983 lm	1542 lm	1596 lm	2286 lm	2067 lm	1608 lm	1665 lm	1097 lm	991 lm	771 lm	799 lm
gunnery grey	2202 lm	1980 lm	1590 lm	1650 lm	2247 lm	2019 lm	1623 lm	1683 lm	2340 lm	2106 lm	1689 lm	1755 lm	1123 lm	1010 lm	811 lm	842 lm
high gloss black chrome	2244 lm	2043 lm	1716 lm	1803 lm	2289 lm	2085 lm	1749 lm	1839 lm	2385 lm	2172 lm	1824 lm	1914 lm	1144 lm	1042 lm	875 lm	920 lm



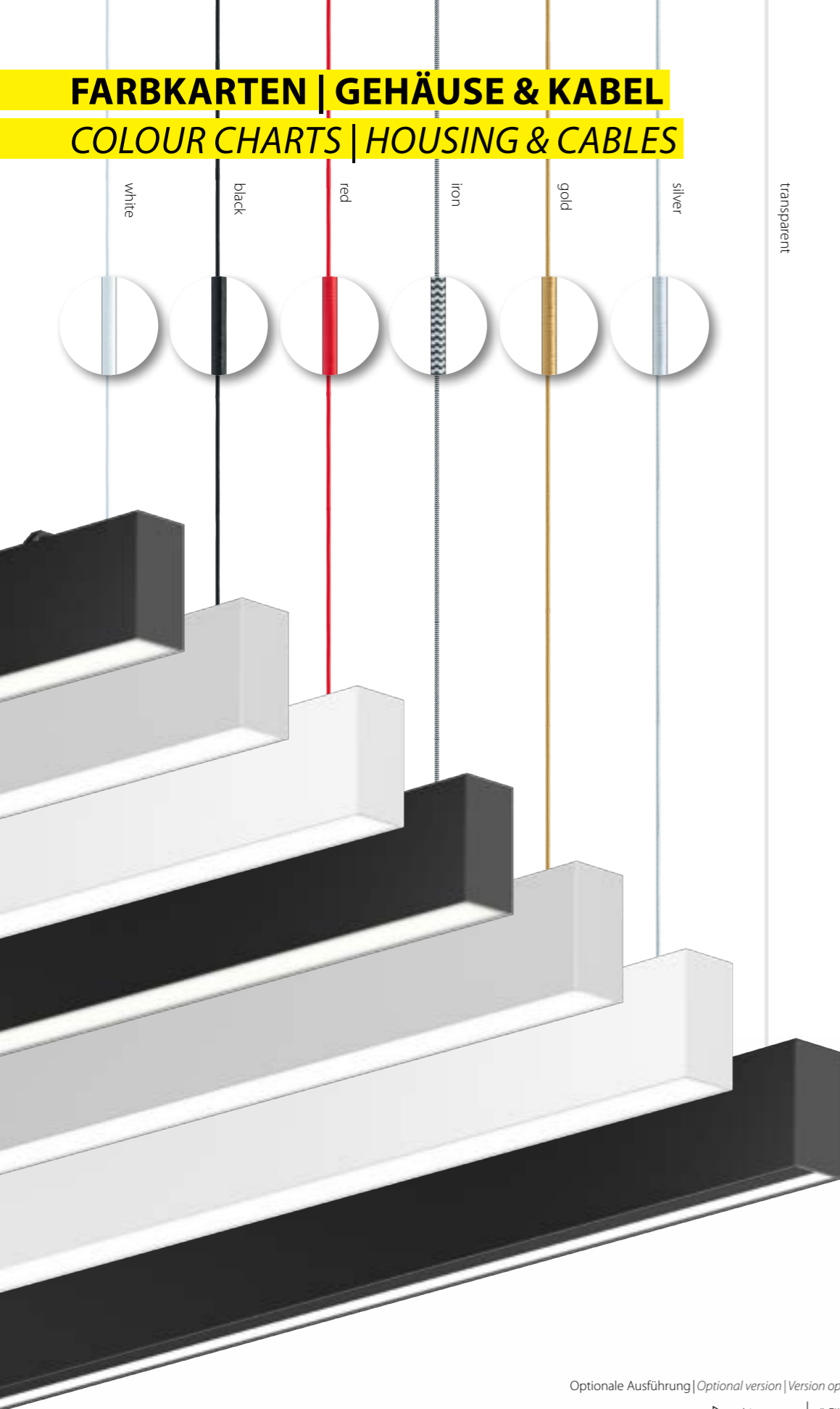
NOBELSTYLE GRAZ

Produkt: anto+ insets
Fotos: © Alexander Kuenzel



FARBKARTEN | GEHÄUSE & KABEL

COLOUR CHARTS | HOUSING & CABLES



Optionale Ausführung | Optional version | Version optionnelle

▷ white	*-EIN-WHITE
▶ black	*-EIN-BLACK
▷ red	*-EIN-RED
▷ iron	*-EIN-IRON
▷ gold	*-EIN-GOLD
▷ silver	*-EIN-SILVER

1750mm
5x0,75mm²

Transparentes Kabel inkl. (Standard Version)



für besondere Anfragen

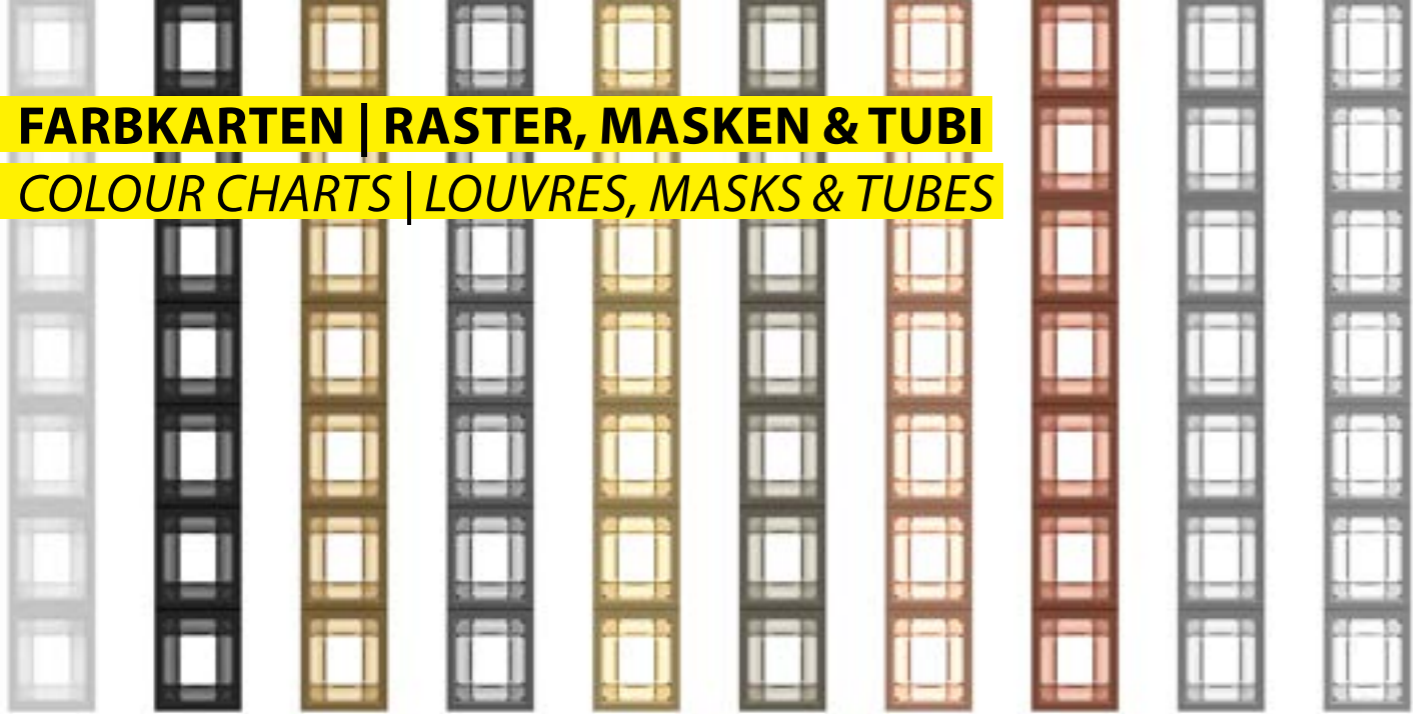
RAL NACH WAHL | OPTIONALE GEHÄUSEFARBEN

RAL OF YOUR CHOICE | OPTIONAL HOUSING COLOURS



FARBKARTEN | RASTER, MASKEN & TUBI

COLOUR CHARTS | LOUVRES, MASKS & TUBES

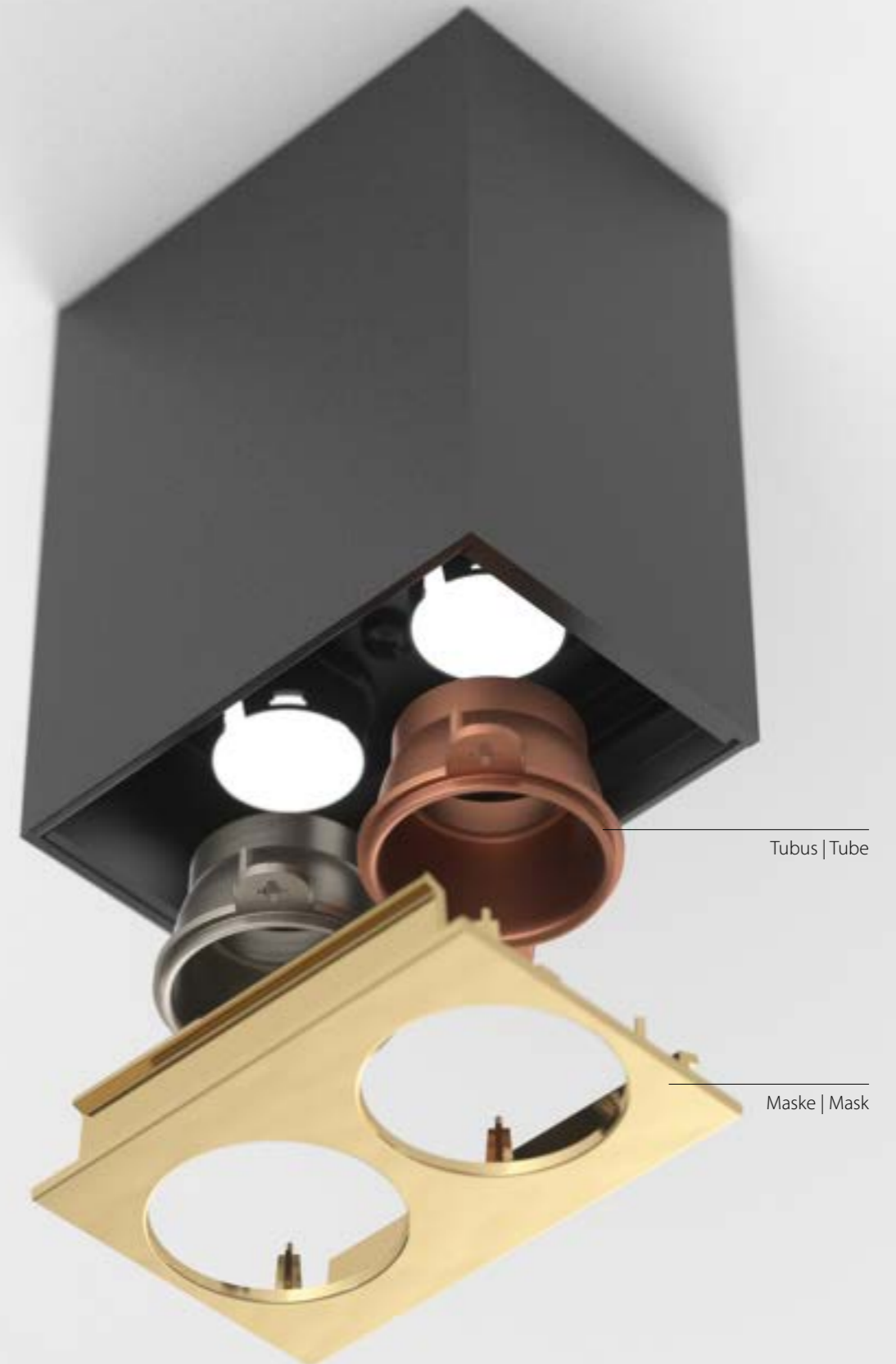


white 9019 black 9005 glaring gold high-gloss black chrome high-gloss gold gunnery grey high-gloss copper capital copper silver matte high-gloss silver



ANTO+ | BESTANDTEILE

ANTO+ | COMPONENTS



WICHTIGE HINWEISE

Dieser Katalog richtet sich ausschliesslich an gewerbliche Kunden. Die in diesem Katalog angegebenen Werte sind Bemessungswerte und unterliegen produktionsbedingten Toleranzen*. Alle angeführten Angaben – insbesondere Grössen-, Material-, Farb- und technische Angaben – entsprechen dem Stand zum Zeitpunkt des Drucks und dienen ausschliesslich zur Information. Der Herausgeber haftet nicht für Satz- und Druckfehler sowie für Abweichungen der Produkte von Abbildungen und Angaben. PLANLICHT behält sich vor, jederzeit ohne Ankündigung Änderungen an Produkten vor zu nehmen. Es gelten die Allgemeinen Geschäftsbedingungen der planlicht GmbH & Co KG, die unter WWW.PLANLICHT.COM eingesehen werden können.

Technische Kennzahlen, angeführte Werte und die Piktogramme betreffen zumindest einen aber nicht zwingend alle Artikel der jeweiligen Leuchtenfamilie, exakte Angaben je Artikel finden Sie im Online-Katalog bzw. in PLANLICHT-Verkaufsbelegen und Datenblättern.

* Leistung, Lichtstrom und Farbtemperatur unterliegen durch den Einsatz von elektronischen Bauteilen produktionsbedingten Toleranzen. Toleranzen Leistung und Lichtstrom: +/- 10%. Toleranz Farbtemperatur: +/- 150 K. Lichtstrom dynamisch weiss bei 2700 K.

IMPORTANT REMARKS

This catalogue is reserved for professionals only. The values published in this catalogue are rated values, which can slightly change for reasons related to the production process. The published data such as dimensions, materials, colours and technical data are valid at time of printing, and exclusively provided for informational purposes. The editor takes no responsibility for typographical and print errors, as well as for any differences in the products, pictures and data. PLANLICHT reserves the right to change the products at any time and without any notice. The Terms and Conditions of planlicht GmbH & Co KG (available on WWW.PLANLICHT.COM) shall apply.*

Key technical specifications, listed values as well as the pictogram bar relate to at least one but not necessarily all items of the respective luminaire family, exact details for each item can be found in the online web catalogue or in PLANLICHT sales documents and data sheets.

* *The power output, luminous flux and colour temperature can be slightly different due to specific electronic components used in the manufacturing process. The power output and luminous flux can differ by +/- 10%. The colour temperature can differ by +/- 150 K. Luminous flux dynamic white at 2700 K.*

REMARQUES IMPORTANTES

Ce catalogue est exclusivement destiné aux professionnels. Les valeurs publiées dans ce catalogue sont des valeurs calculées, pouvant légèrement changer pour des raisons liées au processus de fabrication. Les données techniques et autres informations (dimensions, matériaux, couleurs...) sont celles applicables au moment de l'impression du catalogue, et uniquement fournies à titre informatif. L'éditeur décline toute responsabilité en cas d'erreur de frappe, d'impression et pour tout autre différence concernant les produits, images et données publiées. PLANLICHT se réserve le droit de modifier les produits à sa discrétion, à tout moment et sans préavis. Les conditions générales de vente de planlicht GmbH & Co KG applicables sont consultables sur WWW.PLANLICHT.COM.*

Les caractéristiques techniques, les valeurs indiquées et la barre de pictogrammes concernent au moins un article de la famille de luminaires concernée, mais pas nécessairement tous. Vous trouverez des informations exactes par article dans le catalogue en ligne ou dans les documents de vente et les fiches techniques de PLANLICHT.

* *La puissance, le flux lumineux et la température de couleur peuvent légèrement différer en raison de l'utilisation de composants électroniques spécifiques dans le processus de production. La puissance et le flux lumineux peuvent différer de +/- 10%. La température de couleur peut différer de +/- 150 K. Flux lumineux blanc dynamique à 2700 K.*



6134 Vomp, Austria, Au 25
Tel. +43-5242-71608, Fax +43-5242-71283
info@planlicht.com
WWW.PLANLICHT.COM

IMPRINT

Publisher: planlicht GmbH & Co. KG, Vomp
Creative Concept: Katrin Atzinger
Graphic Design: Beatrice Praxmarer, Christoph Höflinger
Print: Himmer GmbH Druckerei & Verlag, Augsburg/DE
© 2024



WWW.PLANLICHT.COM